

ergotron[®]

moving you forward

CareFit Slim 2.0 LCD Medical Cart

- Small footprint: Works as a point-of-care solution at a patient's bedside, in a hallway or any other area
- Sturdy platform: Supports large all-in-one computer and monitors up to 27" and 10–20 lbs (4.5–9.1 kg)
- Fits your users: Allows short, tall or average-height clinicians to work comfortably and effectively
- Simple height adjustment: Offers full sit-to-stand functionality from 29.25–46.75" (74–119 cm)
- Leaner design: Fits tightly against a wall to free up valuable space when not in use
- Extra storage: Optional drawer and cable management keeps essential supplies and cords out of the way, yet accessible
- Easily customizable: Works with a broad range of accessories for specific workflows



IMPROVED DOCUMENTATION CARTS FIT YOUR PEOPLE,
WORKFLOWS AND ENVIRONMENTS

CAREFIT™

The enhanced design of this ultra-lean, lightweight documentation cart supports larger all-in-one computers from 10–20 lbs (4.5–9.1 kg) with the warm aesthetic of the CareFit product family. The LCD cart with or without a single drawer offers an expansive vertical range to easily adjust to the ergonomic needs of a broad range of users.

The slim depth and small footprint make it a versatile point-of-care solution for a patient's bedside, in a hallway or any other area. When not in use, it fits tightly against a wall to free up valuable space. It's easily customizable with accessories to fit different workflows.

CareFit Slim 2.0 LCD Medical Cart

OFFER A PULL-OUT KEYBOARD AND LARGE WORKSURFACE TO SUPPORT ALL-IN-ONE COMPUTERS AND MONITORS, WITH NO-DRAWER AND ONE-DRAWER MODELS AVAILABLE.

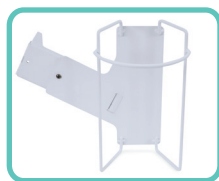
- 1 Designed for lean IT configurations USFF+LCD or AIO 21–27" weighing from 10–20 lbs (4.5–9.1 kg)
- 2 Telescopic lift provides an additional 5" (13 cm) of monitor height adjustment
- 3 Spacious worksurface is 20.7" x 14.3" (52.5 x 36.3 cm)
- 4 Slide-out keyboard tray and pull-out mouse tray (left or right side) hides under the keyboard tray when not in use
- 5 Offers easy height adjustability with the pull of a lift handle
- 6 Accessory shelf for printer or scanner on left; sani-wipes holder on right
- 7 Lift engine offers an expansive vertical range of 29.25–46.75" (74–119 cm)
- 8 Easily add a hot-swap power system
- 9 Compact cast aluminum base with durable finish; includes three-function 4" (10.2 cm) casters



	No Drawer	With Drawer
Part number	C50-3500-0 (white/warm grey)	C50-3510-0 (white/warm grey)
Typical LCD size	Optimized for lean IT configurations USFF + LCD 21–27" = 10–20 lbs (4.5–9.1 kg)	
Worksurface dimensions	20.7" x 14.3" (52.5 x 36.3 cm)	
Base footprint dimensions	18" x 16.7" (46 x 42 cm)	
Lift	17.5" (44.5 cm)	
Height adjustment range	29.25–46.75" (74–119 cm)	
Cart weight	67.5 lbs (29.6 kg)	66.9 lbs (30.4 kg)
Shipping dimensions	30.6" x 25" x 44.3" (77.8 x 63.5 x 112.7 cm)	
Shipping weight	103.4 lbs (47 kg)	105.2 lbs (47.8 kg)
Warranty	5 years	



T-SLOT WIPES HOLDER
98-450



SIDE-MOUNT WIPES HOLDER, SLIM 2.0
98-451



VINYL CORD COVER KIT
98-453



T-SLOT SCANNER AND PRINTER HOLDER
98-465



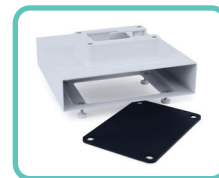
SIDE-MOUNT SCANNER BRACKET, SLIM 2.0
98-466



SIDE-MOUNT SCANNER HOLDER, SLIM 2.0
98-467



SIDE-MOUNT PRINTER BRACKET, SLIM 2.0
98-468



MINI CPU HOLDER, SLIM 2.0
98-470



FRONT SHELF, SLIM 2.0
98-476

Download additional resources at ergotron.com.

For more information:

USA & Canada: 800.888.8458 / +1.651.681.7600 / insidesales@ergotron.com

EMEA: +31.33.45.45.600 / info.eu@ergotron.com

APAC: apaccustomerservice@ergotron.com

LATAM: +1.800.681.1820 / info.latam@ergotron.com

Custom: custom@ergotron.com

© Ergotron, Inc. 09.30.2020

Literature made in the U.S.A.

Content subject to change.

Ergotron devices are not intended to cure, treat, mitigate or prevent any disease.

Patent information available at www.ergotron.com/patents.

