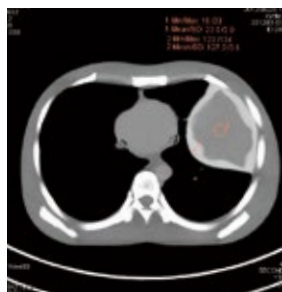
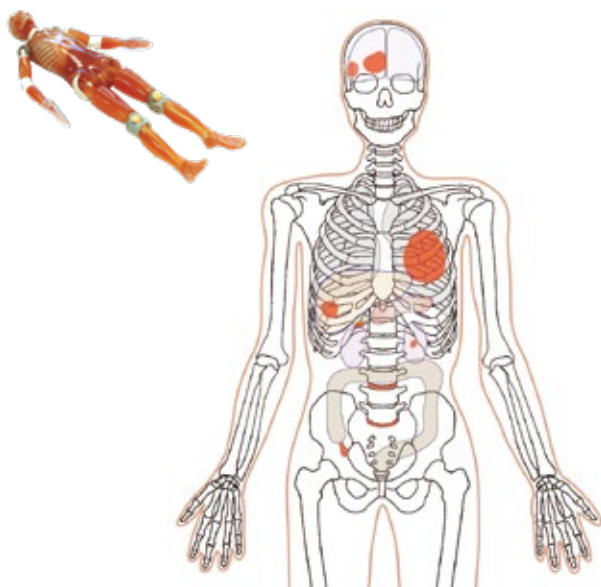


PH-2E | 41350-700

CT Whole Body Phantom with Pathologies



Pathological findings in the phantom expand possibilities in training application



ANTHROPOMORPHIC PHANTOMS

FEATURES

- | Radiology absorption and HU number approximate to human body
- | Main joints have close-to human articulation
- | Phantom can be disassembled into 10 individual parts

APPLICATIONS

- | CT
- | Plain X-ray
- | Basic patient positioning

ANATOMY and PATHOLOGY

| Cases | HU number at 80KeV |
|-------------------------|--------------------------|
| Brain tumor | 130 |
| Subarachnoid hemorrhage | 90 |
| Pulmonary tumor | inside: 30/ outside: 130 |

| Cases | HU number at 80KeV |
|---------------|--------------------|
| Hepatic tumor | 10 |
| Pancreatitis | 30 |
| Gall stone | 170 |

| Cases | HU number at 80KeV |
|-------------------|-------------------------|
| Kidney stone | 170 |
| Appendicitis | inside: 30/ outside: 40 |
| Spondylolisthesis | - |

Full internal organs

| Internal organs | HU number at 80KeV |
|--|---------------------------------|
| Brain | |
| Cerebrum | 40 |
| Mesencephalon | 40 |
| Cerebellum | 40 |
| Cerebral ventricles | 10 |
| Eye balls | 20 |
| Arteries with contrast medium (left half only) | 250 |
| Lungs | -1000 |
| Pulmonary vessels | 8 |
| Trachea | trachea wall: 8 / inside: -1000 |
| Heart | PBU-50: 8 / PBU-60: 40 |
| Liver | 70 |

| Internal organs | HU number at 80KeV |
|--------------------------|--------------------------------|
| Portal and hepatic veins | 40 |
| Pancreas | 30 |
| Kidneys | 30 |
| Gallbladder | 20 |
| Spleen | 50 |
| Seminal vesicle | 25 |
| Aorta | 40 |
| Cava | 70 |
| Ureter | ureteral wall: 30 / inside: 10 |
| Urinary bladder | 10 |
| Prostate | 50 |
| Rectum | rectum wall: 70 / inside: -800 |
| Sigmoid Colon | colon wall: 70 / inside: -800 |

Bony structure

| |
|--------------------|
| Synthetic skull |
| Cervical vertebrae |
| Vertebrae |
| Clavicles |
| Ribs |
| Sternum |
| Scapula |
| Coxal bones |
| Femurs |

DESCRIPTIONS

SET INCLUDES

- 1 whole body phantom
- 1 head supporter
- 1 flat head screwdriver
- 1 set of sample X-ray data (DVD) manual

SPECIFICATIONS

Phantom height: 165 cm / 65 in
 Phantom weight: 50 kg / 110 lb
 Packing size: 85 x 60 x 44 cm x 2 boxes / 33.5 x 24 x 17.3 in x 2 boxes
 Packing weight: 80 kg / 176 lb

MATERIALS

Soft tissue: urethane based resin (specific gravity: 1.06)
 Synthetic bone: epoxy resin (specific gravity: 1.31)
 Skull: epoxy resin (specific gravity: 1.11)
 *Phantom has no metal parts or liquid structure

OPTIONAL PARTS

- 41363-070 storage cases (consist of 2 boxes)
- 41350-200-16 body plates for PH-2/2B (BMI 32)
- 41350-200-17 body plates for PH-2/2B (BMI 40)

Storage case P.12 ▶